

LED Installation Instructions

The basic installation plan is :

You should install the LED somewhere convenient on your dash.
3mm led on the dash plastics works well.

Mounting inside the Trailtech switch is NOT for the faint hearted

This actually is pretty hard.

Not so much the install, but breaking the switch open is a right bastard !!!

There is a good chance of breaking the housing or just ruining the edges and turning it into something that looks like the dog chewed up.

If you insist ...

To **Break the switch open** you will need some good sharp small flat bladed screwdrivers.
I also ran round and rouns and round and round the gap with a sharp bladed knife.

With plenty of time and patience, keep working your way around the switch, gently but firmly trying to prise the top part of the switch up and away from the bottom part.

(You are trying to get your blade 'under the top part.

Beware, the plastic is soft and will not stand too much abuse.

Work carefully and methodically, don't go for gold.

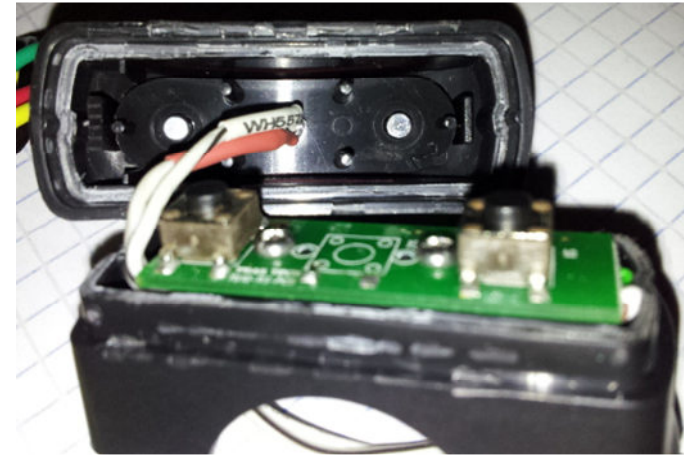
Use a very small tipped screwdriver and try to get it 'under' the lip of the top part of the switch.
If you're doing it right, you'll hear the plastic/glue giving way... good job keep at it!

Whew! It's Apart !

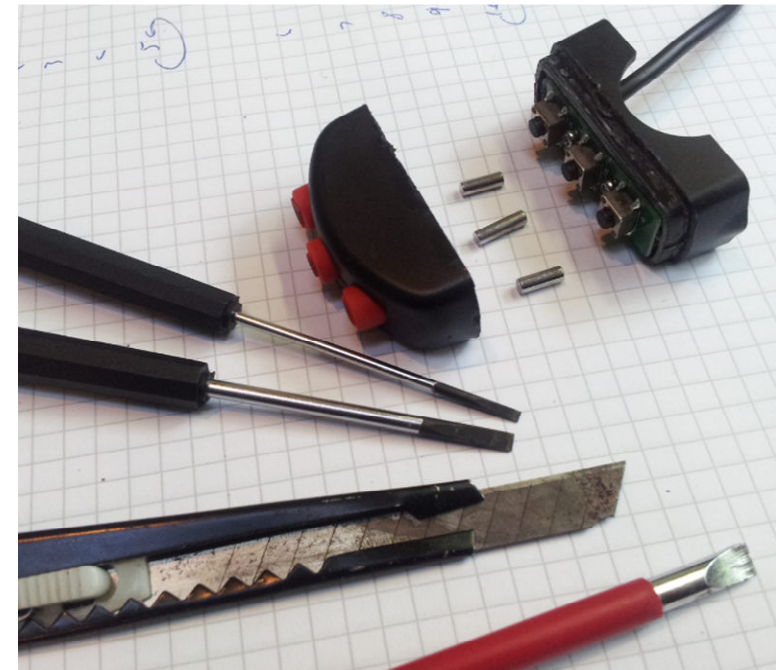
Ok ... Inside you will see a small cct board with three push buttons. Also three push rods will fall out from the top part. (NOTE: Keep the two short rods).

- Remove the screws from the cct board and pull the board our
- Remove the middle switch from the board. (cut or desolder)
- You may also need to enlarge the hole in the bottom switch housing for the two extra wires (or drill a 2nd hole).
- Insert your LED wires from the back and feed to the front.
- Reassemble the cct back into the housing.
- Solder the LED onto your wires and jam or glue it into the CENTER hole in the top housing.
- Re-insert the two SHORT rods, and glue your housing back together.

Feed the LED wires back along the bike under the tank (LHS) and connect to the LED socket on the resistor board.



Housing opened – center switch removed – LED wired and jammed in place



The tools I used - also note the three push rods